

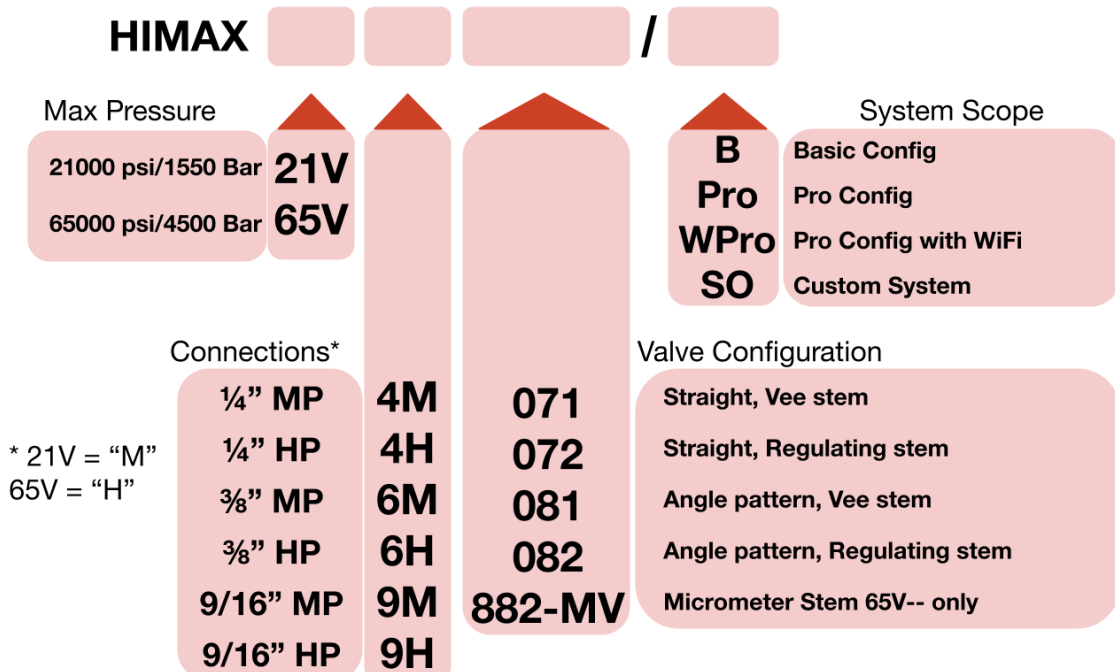
**HIMAX - PRECISION ACTUATED
HIGH PRESSURE VALVE, RATED
65,000 psi/4,500 BAR**

Sophisticated, accurate control for demanding applications

Features

- Precision high pressure valve.
- High duty stepper motor with worm drive gearbox
- 7500 steps per valve turn for high position accuracy
- Full colour touch screen available with app for venting control

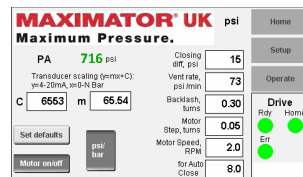
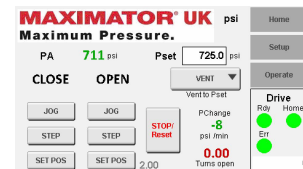
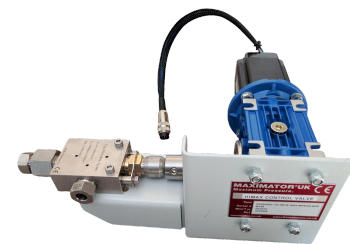
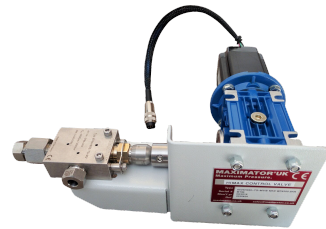
Ordering information




Example model numbers: HIMAX 21V4M071/B, HIMAX 65V4H882-MV/Pro

Technical information

Valve	High pressure stainless steel valve. See separate Maximator data sheets
System Scope	
<p>B</p> <p>Basic Configuration</p>	<p>Items included:</p> <ul style="list-style-type: none"> - Valve with mounting bracket, stepper motor and worm drive - Controller (requires 24 v dc supply) <p>Functions available:</p> <ul style="list-style-type: none"> - Control valve position using 0-10v signal: 0v = closed, 10v = open - Set closed position - Set open position - Jog open - Jog Closed - Step open - Step Closed <p>Valve movements (except 0-10v position control) by pushbuttons connected to controller</p> <p>VNC Server:</p> <ul style="list-style-type: none"> - Connect using a PC and freely available VNC viewer to view and change motor speed and step amounts. (Ethernet cable required)
<p>Pro</p> <p>Pro Configuration</p>	<p>Items included:</p> <ul style="list-style-type: none"> - Valve with mounting bracket, stepper motor and worm drive - Controller (requires 24 v dc supply) - Screen with colour touch display <p>Functions available:</p> <ul style="list-style-type: none"> - Vent to user-set inlet pressure - Set closed position - Set open position - Jog open - Jog Closed - Step open - Step Closed - Move to open position - Move to closed position - View inlet pressure - View valve position - View inlet pressure rate of change - Calibration of inlet pressure transducer - Change motor speed, step amount and transducer range - View pressures in psi or Bar



<p>WPro Pro Configuration with wireless</p>	<p>Items included:</p> <ul style="list-style-type: none"> - Valve with mounting bracket, stepper motor and worm drive - Controller (requires 24 v dc supply) - Screen with colour touch display - Wireless access point and power supply <p>Functions available:</p> <ul style="list-style-type: none"> - As per Pro spec unit, with the ability to connect to the app wirelessly from computer, tablet or phone to control all functions
<p>SO Special Order</p>	<p>Custom implementation according to agreed specification, may include additional functions and modules, up to a complete test bench or fully automatic system.</p> <div style="text-align: center;">  </div>

Disclaimer: Data is provided for information and may be subject to change.